



Support with life's challenges

Counselors are here to help you live a happy, productive life. Access a national network of licensed professionals face-to-face and/or by video conference (if offered).* Schedule your free, confidential appointment today.

Get help with a variety of concerns including:

- Family and relationship issues
- Grief and stress
- Anxiety and depression
- Substance abuse problems

Give us a call or learn more at [MagellanAscend.com](https://www.MagellanAscend.com)

**Face-to-face and video conference sessions can be used interchangeably and count toward your program's session limit.*

**Employee Assistance Program
For Professional Consultation**

Call 1-800-523-5668

For TTY Users: 1-800-456-4006



Services to save you time and money

Why spend more when you don't have to? You and your household members have access to LifeMart®, an online center and mobile app offering money-saving discounts on major brands and everyday needs.

Save on:

- Child and elder care
- Movie tickets and entertainment
- Restaurants and travel
- Car rentals and hotels
- Groceries, home appliances and decor

Employee Assistance Program
For Professional Consultation

Call 1-800-523-5668

For TTY Users: 1-800-456-4006

Give us a call or learn more
at MagellanAscend.com



Your life's journey—made easier

Your program offers no cost, confidential services to help with checking off daily tasks and more complex issues, too.

- Coaching to help you achieve your goals
- Counseling for family & relationships, stress, grief and other issues
- Mobile apps for help with depression, anxiety, insomnia and substance use
- Additional services are also available to help get you on the right path
- Available 24/7/365 to you and your household members

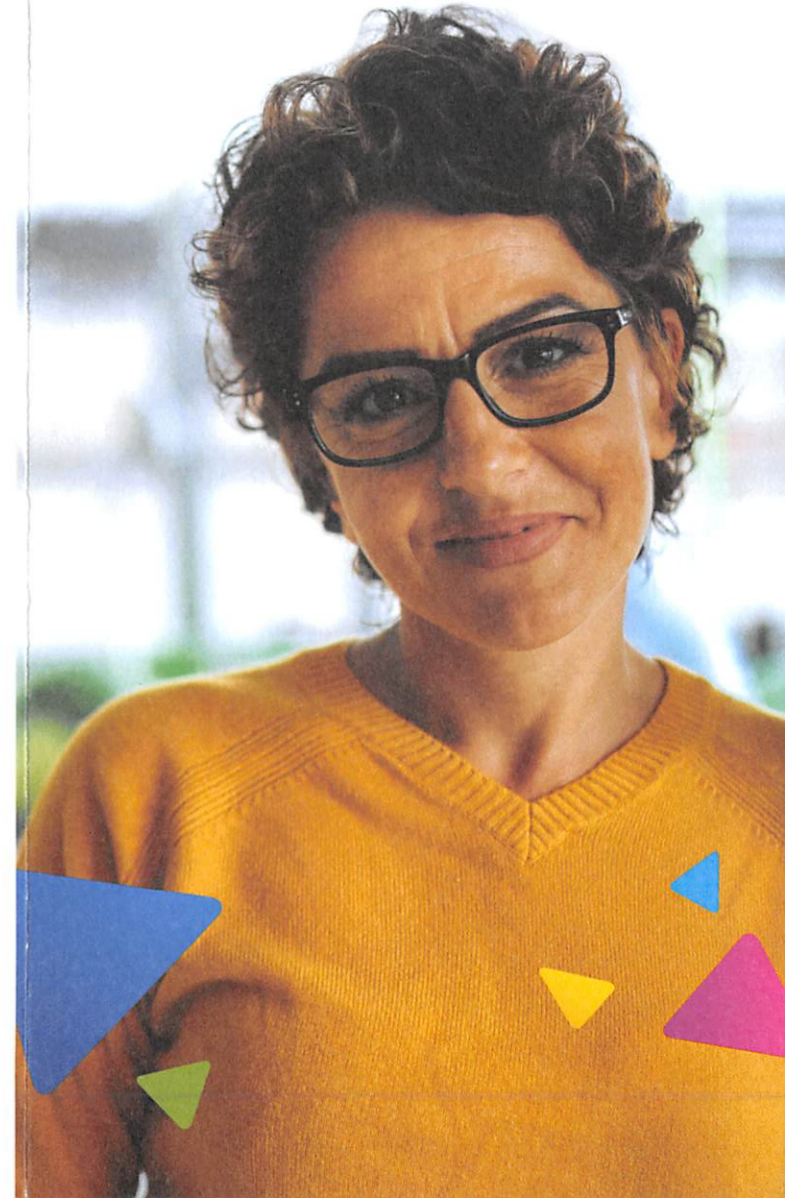
**Employee Assistance Program
For Professional Consultation**

Call 1-800-523-5668

For TTY Users: 1-800-456-4006

Give us a call or learn more
at MagellanAscend.com

Your life's journey— made easier



Get started today

Your program is here to help you along the journey of life. No situation is too big or too small. When you and your household members need assistance, reach out anytime and we will help get you on the right path to meet your needs.



Give us a call

We will assess your individual situation and connect you with the right resource or professional to address your challenges, questions or needs.



Visit us online

Learn more about all of the services available to you and your household members at MagellanAscend.com.

Important: Can you read this? If not, we can have somebody help you read it. For free help, please call your toll-free number.

Importante: ¿Puede leer esta carta? Si no, alguien le puede ayudar a leerla. Además, es posible que reciba esta carta escrita en Español. Para obtener ayuda gratuita, llame a su número gratuito.

In California, services are delivered by Magellan subsidiaries: Magellan Health Services of California—Employer Services and Human Affairs International of California.

Magellan
HEALTHCARE®

©2018 Magellan Health, Inc.
B-B1019rev1 (1/19)

"Life is a journey with problems to solve, lessons to learn, but most of all experiences to enjoy."

— RITU GHATOUREY

Life is full of peaks and valleys, and your program provides comprehensive, confidential assistance to you and your household members during good times and bad, all at no cost to you.

Your life's journey—made easier

Visit MagellanAscend.com or call anytime to get help with topics such as:

- Emotional wellness
- Family & relationships
- Grief & loss
- Stress & balance
- Workplace support
- Daily life solutions

Your life's journey—made easier

Visit MagellanAscend.com or call anytime to get help with topics such as:

- Emotional wellness
- Family & relationships
- Grief & loss
- Stress & balance
- Workplace support
- Daily life solutions

Detach and keep a card with your other important cards so it's easy to find. Give the other one to a household member for easy reference.

Life is a journey, not a destination

Employee Assistance Program

No matter where you are on your journey, there are times when a little help can go a long way toward achieving your goals. From checking off daily tasks to working on more complex issues, your program offers you and your household members a variety of resources, tools and services to help make your life a little easier.

- Build your resiliency by attending a webinar
- Tackle a personal issue by using a self-paced app
- Accomplish a goal with the help of a coach

Key features

- Provided at no cost to you and your household members
- Completely confidential service provided by a third party
- Available 24/7/365

Getting the help you need, when you need it, can result in you leading a happier, more productive life.

Coaching

Your coach will:

- Meet with you by phone or video conference
- Create a clear cut plan of action to help you meet your goals
- Provide resources, assist with problem-solving, follow-up and accountability

Counseling

Access a nationwide network of licensed professionals for support with challenges such as stress, anxiety, grief, substance misuse, relationships concerns and more. Meet with your counselor in-person or by video conference (if available).

Online programs

Self-guided programs can help improve your health and overall emotional well-being if you're struggling with depression, anxiety, insomnia, chronic pain, substance misuse or an obsessive compulsive disorder. The programs are easily accessible and proven effective.

Legal assistance, financial coaching & identity theft resolution

Expert consultation to help with your legal, financial and identity theft needs. Access a free online library with resources for identity theft resolution, budgeting, debt management, family law, wills and more.

Work-life services

Save time and money on life's most important needs. Specialists provide expert guidance and personalized referrals to service providers including childcare, adult care, education, home improvement, consumer information, emergency preparedness and more.

Resiliency

Being resilient generally means you're able to adapt to hard times, to challenges, and to other sorts of adversity in life. Fortunately, you can develop skills to become more resilient and your program provides many resources to help you on your journey.

Employee Assistance Program
For Professional Consultation
Call 1-800-523-5668
For TTY Users: 1-800-456-4006

Employee Assistance Program
For Professional Consultation
Call 1-800-523-5668
For TTY Users: 1-800-456-4006

Detach and keep a card with your other important cards so it's easy to find. Give the other one to a household member for easy reference.

